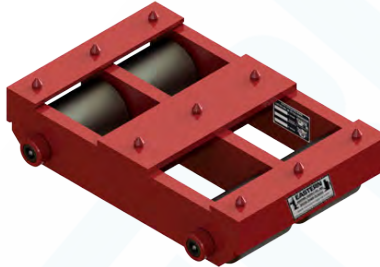


RIGGERS DOLLIES ARE AN EXCELLENT "ALL AROUND" PIECE OF EQUIPMENT, A "MUST HAVE" FOR EVERY RIGGER OR MACHINERY MOVER.

**SSRD-1012-P**  
(poly rollers)



**SSRD-1040**  
(steel rollers)



**SSRD-1060-P**  
(poly rollers)



**Features & Benefits**

- Low profile
- Heavy duty
- Ideal for narrow spaces
- Maximum durability
- Rows of tandem rollers
- Fully welded steel frame

Dollies are available with steel or poly rollers. Poly rollers are only recommended for moving on floors that require protection. They are not recommended for loads resting for an extended period of time or on rough or uneven surfaces.

The heavy duty welded frame makes them the most durable and long lasting of it's kind. The high-carbon steel axles run the entire length of each roller for easy operation.


Riggers dollies can also be customized for any special application.

**Steel Rollers**

Part#	Capacity Tons	Length in.	Width in.	Height in.	Weight Lbs.
SSRD-1012	6	15-3/4"	10-1/2"	3-7/8"	58
SSRD-1040	20	16"	11-3/4"	4"	81
SSRD-1060	30	16"	11-3/4"	4"	104

**Poly Rollers**

Part#	Capacity Tons	Length in.	Width in.	Height in.	Weight Lbs.
SSRD-1012-P	6	15-3/4"	10-1/2"	3-7/8"	46
SSRD-1040-P	20	16"	11-3/4"	4"	69
SSRD-1060-P	30	16"	11-3/4"	4"	86

Idea! Use in a three point configuration for maximum maneuverability.  
For example:  
 (2) SSRD-1040 and (1) RDTs-30-H with handle connector

*RDTs-30-H (below) with steering handle connector*

