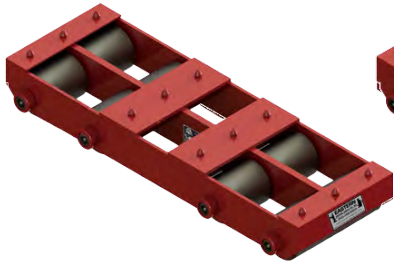


RIGGERS DOLLIES ARE AN EXCELLENT "ALL AROUND" PIECE OF EQUIPMENT, A "MUST HAVE" FOR EVERY RIGGER OR MACHINERY MOVER.

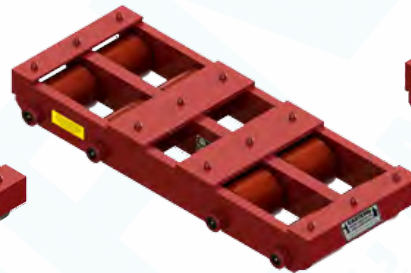
SRD-15
(steel rollers)



SRD-50
(steel rollers)



SRD-100-P
(poly rollers)



SRD-200
(steel rollers)



Features & Benefits

- Low profile
- Heavy duty
- Ideal for narrow spaces
- Maximum durability
- Rows of tandem rollers
- Fully welded steel frame

Dollies are available with steel or poly rollers. Poly rollers are only recommended for moving on floors that require protection. They are not recommended for loads resting for an extended period of time or on rough or uneven surfaces.

The heavy duty welded frame makes them the most durable and long lasting of it's kind. The high-carbon steel axles run the entire length of each roller for easy operation.

Riggers dollies can also be customized for any special application.

Steel Rollers

Part#	Capacity Tons	Length in.	Width in.	Height in.	Weight Lbs.
SRD-15	10	27-3/4"	10-1/2"	4"	110
SRD-50	25	28"	11-1/4"	4-1/8"	140
SRD-100	50	28"	12"	4-1/8"	150
SRD-200	100	29-3/4"	12"	4-3/4"	229

Poly Rollers

Part#	Capacity Tons	Length in.	Width in.	Height in.	Weight Lbs.
SRD-15-P	10	27-3/4"	10-1/2"	4"	81
SRD-50-P	20	28"	11-1/4"	4-1/8"	111
SRD-100-P	20	28"	12"	4-1/8"	121
SRD-200-P	55	29-3/4"	12"	4-3/4"	187